

PART OF THE SE.1\4, OF SECTION 15, T.6N., R.3W., S.L.B. & M.  
ONE FOR THE KID SUBDIVISION

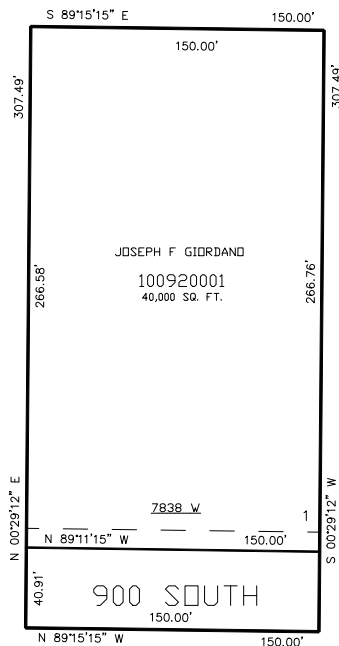
IN WEBER COUNTY  
SCALE 1" = 50'

TAXING UNIT: 303

SEE PAGE 37

SEE PAGE 37

SEE PAGE 37



SEE PAGE 43

FOR COMPLETE ENG DATA SEE  
ORIGINAL DEDICATION PLAT IN  
BOOK 54, PAGE 28 OF RECORDS.

10' UTILITY & DRAINAGE EASEMENTS EACH  
SIDE OF PROPERTY LINES AS INDICATED  
BY DASHED LINES EXCEPT AS OTHERWISE  
SHOWN.